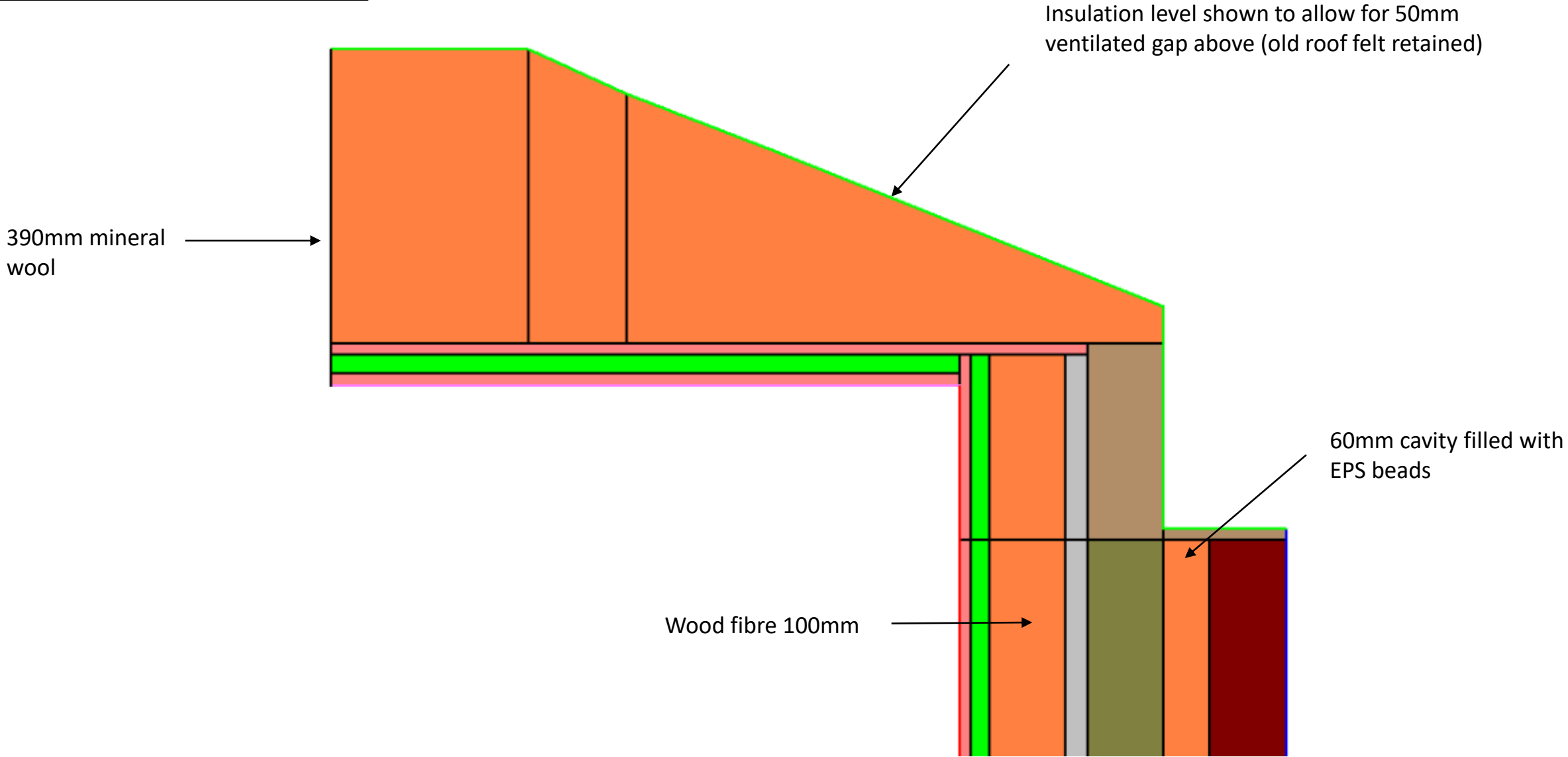


**External wall to main loft –
insulation strategy**



**External wall to main loft
– airtightness strategy**

300mm distance of membrane
past top of insulation layer

Windtight membrane used to protect
mineral wool at eaves junction, 50mm
ventilated gap above maintained

Windtight membrane
taped to wall plate
with airtight tape (e.g.
Proclima Vana or
Contega)

Airtight tape (e.g. Proclima Vana)
at membrane joints

Airtight membrane (Proclima
Intello) sandwiched to existing
ceiling using battens into ceiling
joists

Airtight membrane (Proclima
Intello) in front of wood fibre

