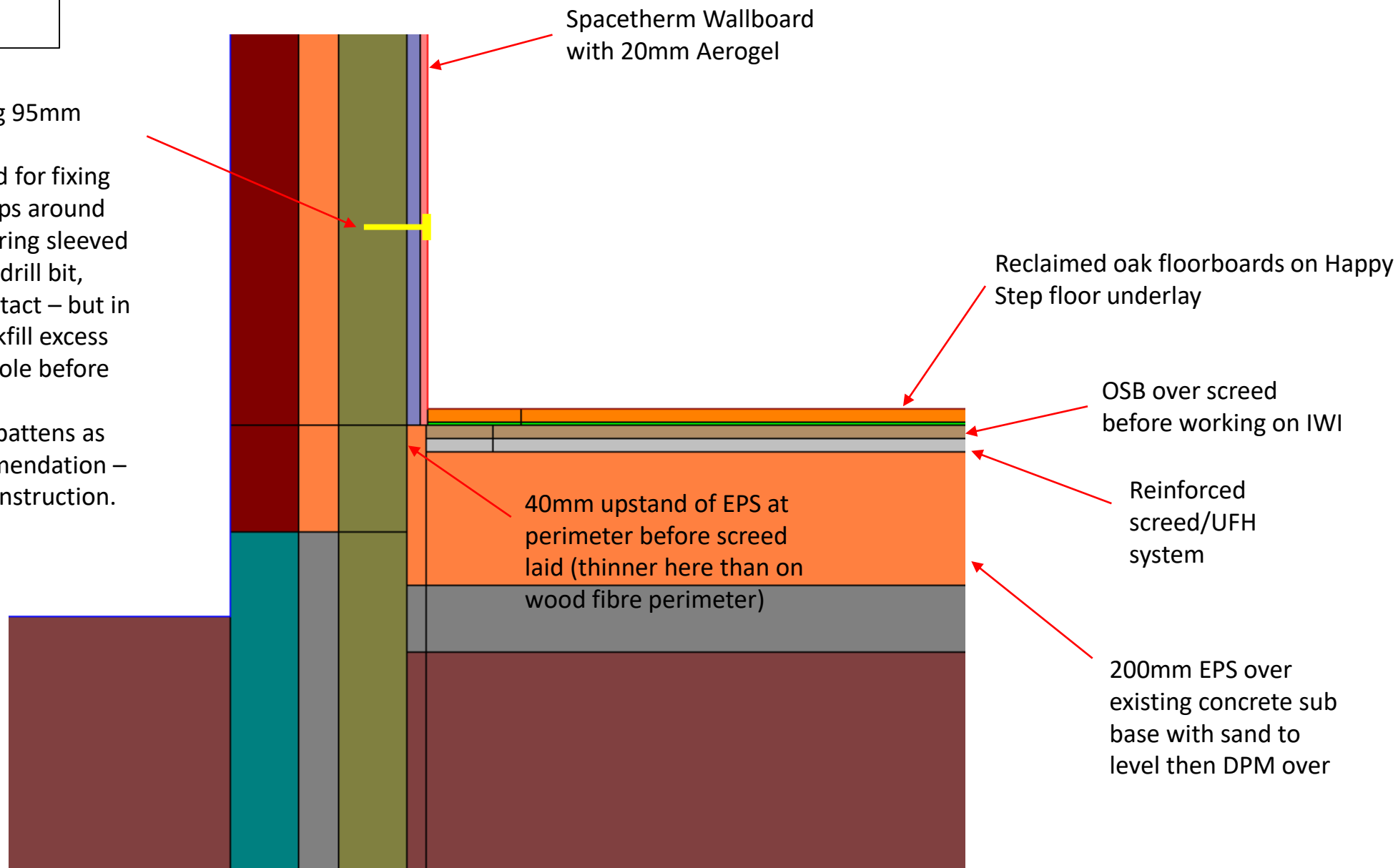


IWI (Spacetherm) to solid floor – insulation strategy

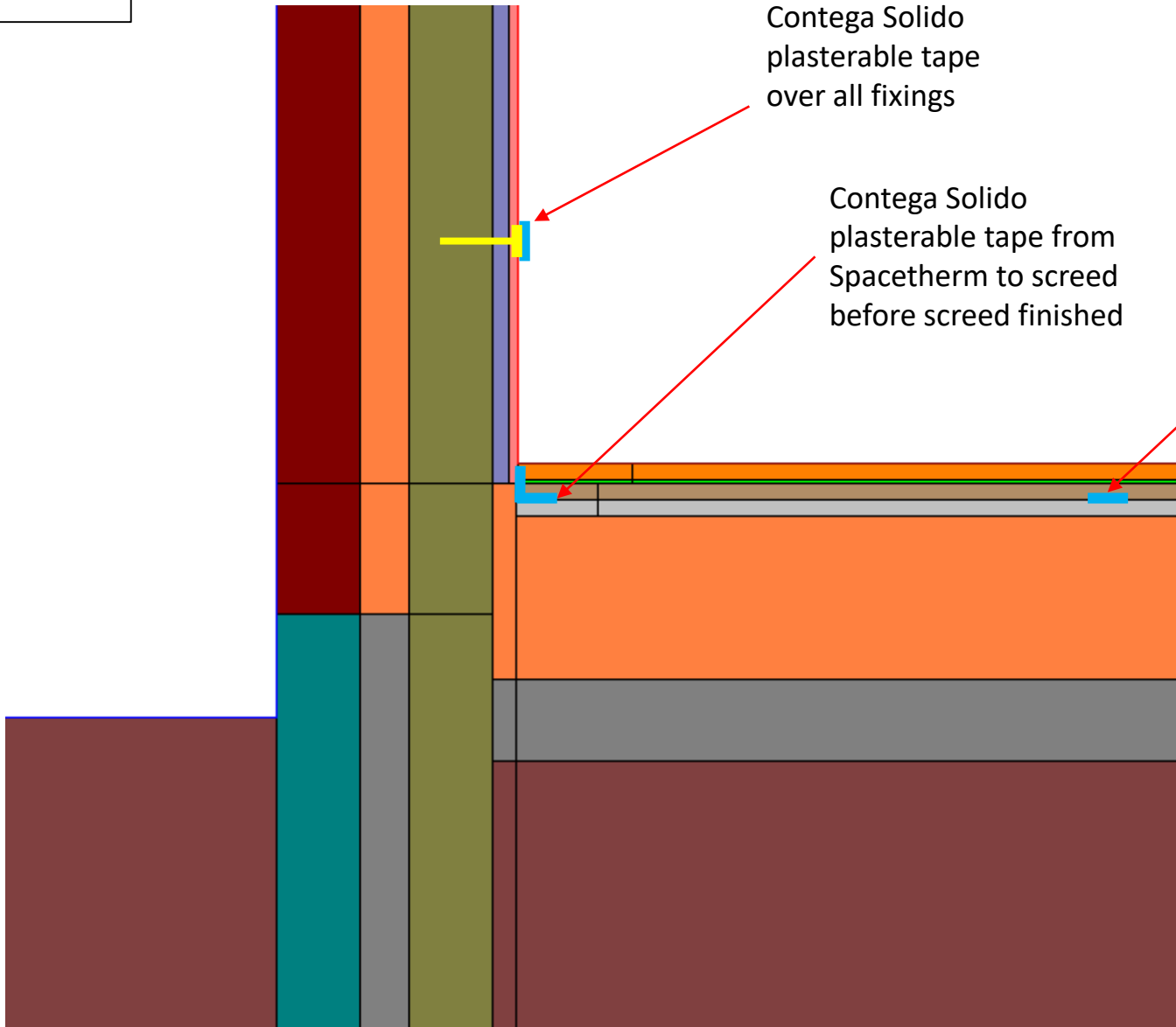
EJOT H1-ECO hammer-in fixing 95mm

Notes:

- Experimentation is needed for fixing process since Aerogel wraps around drill bits. Maybe try preparing sleeved drill holes just larger than drill bit, which ensure Aerogel is intact – but in this case, will need to backfill excess space with foam in each hole before fixing is applied).
- Do not fix Spacetherm to battens as per Proctor Group recommendation – always avoid cavities in construction.



**IWI (Spacetherm) to solid floor –
airtightness strategy**



Contega Solido
plasterable tape
over all fixings

Contega Solido
plasterable tape from
Spacetherm to screed
before screed finished

Contega Solido tape
needed between
UFH boards prior to
screed?