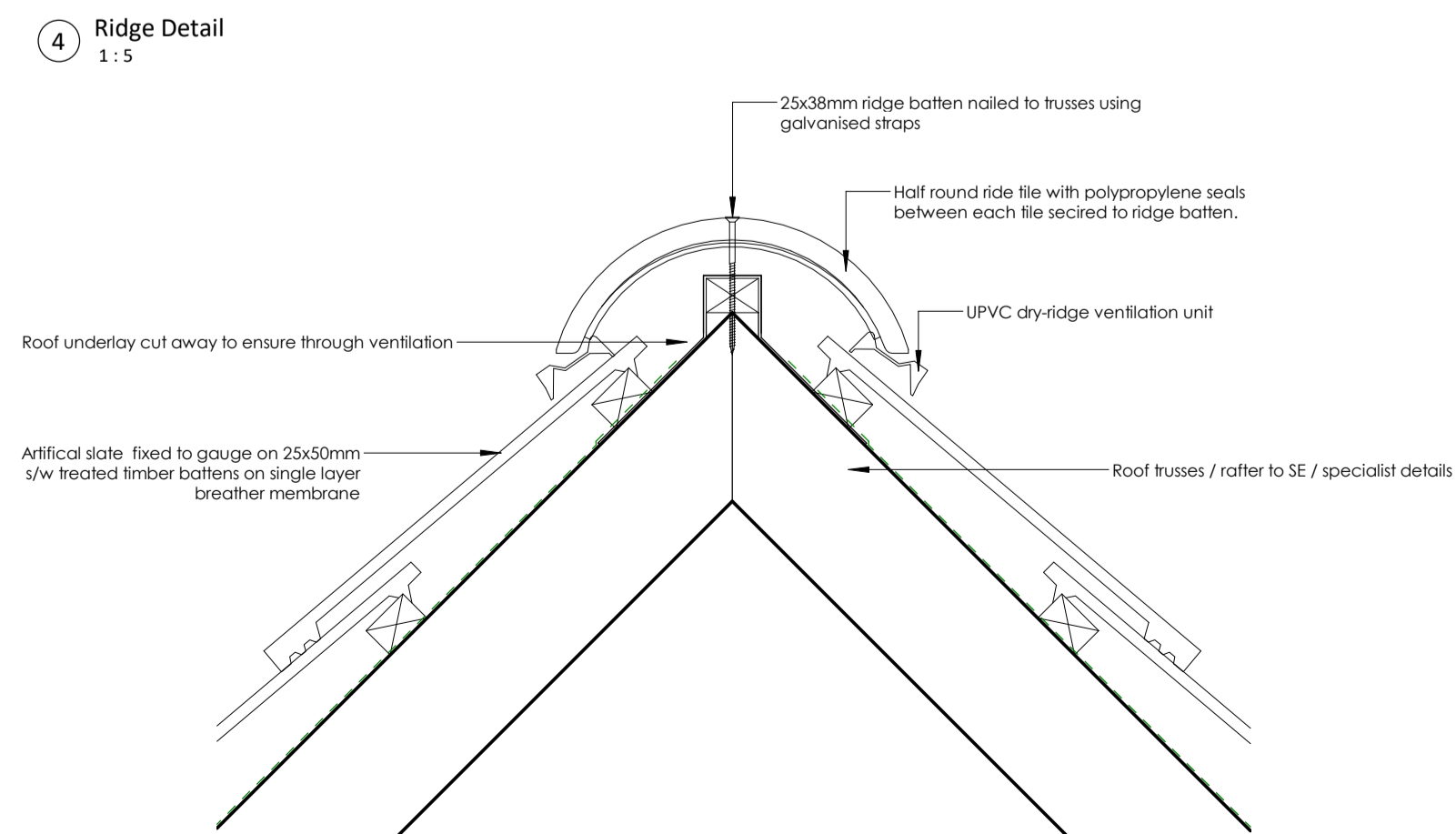
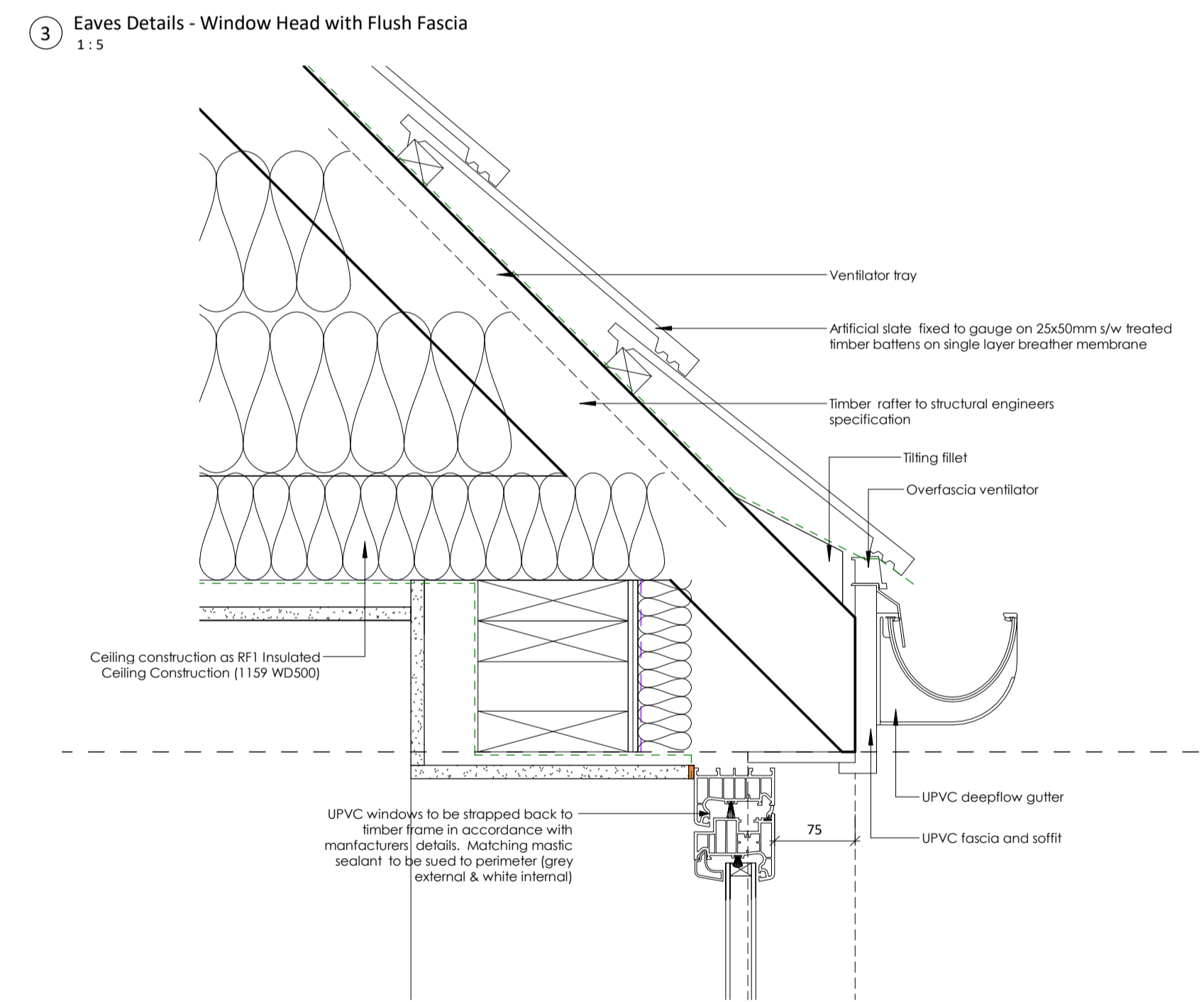
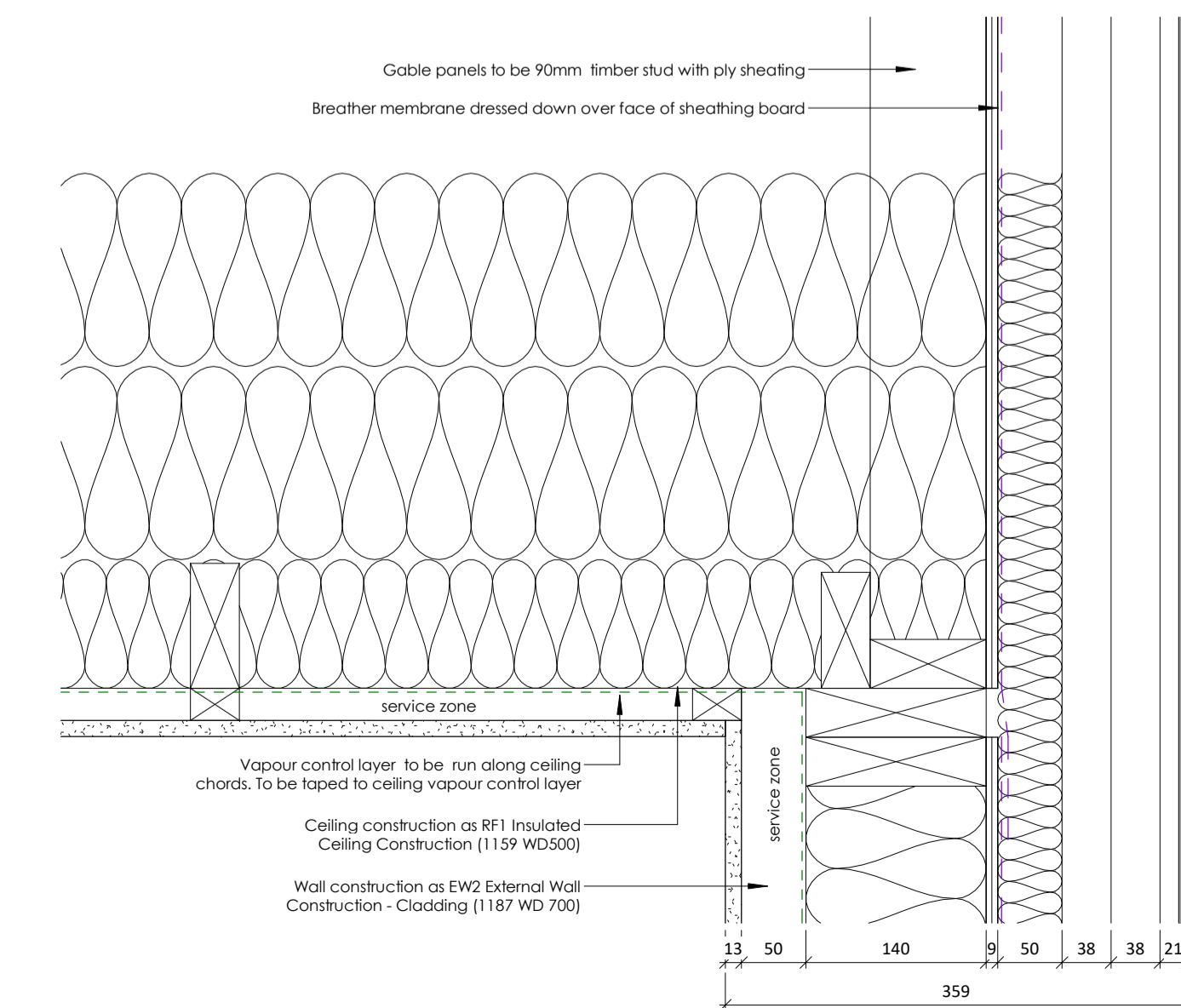
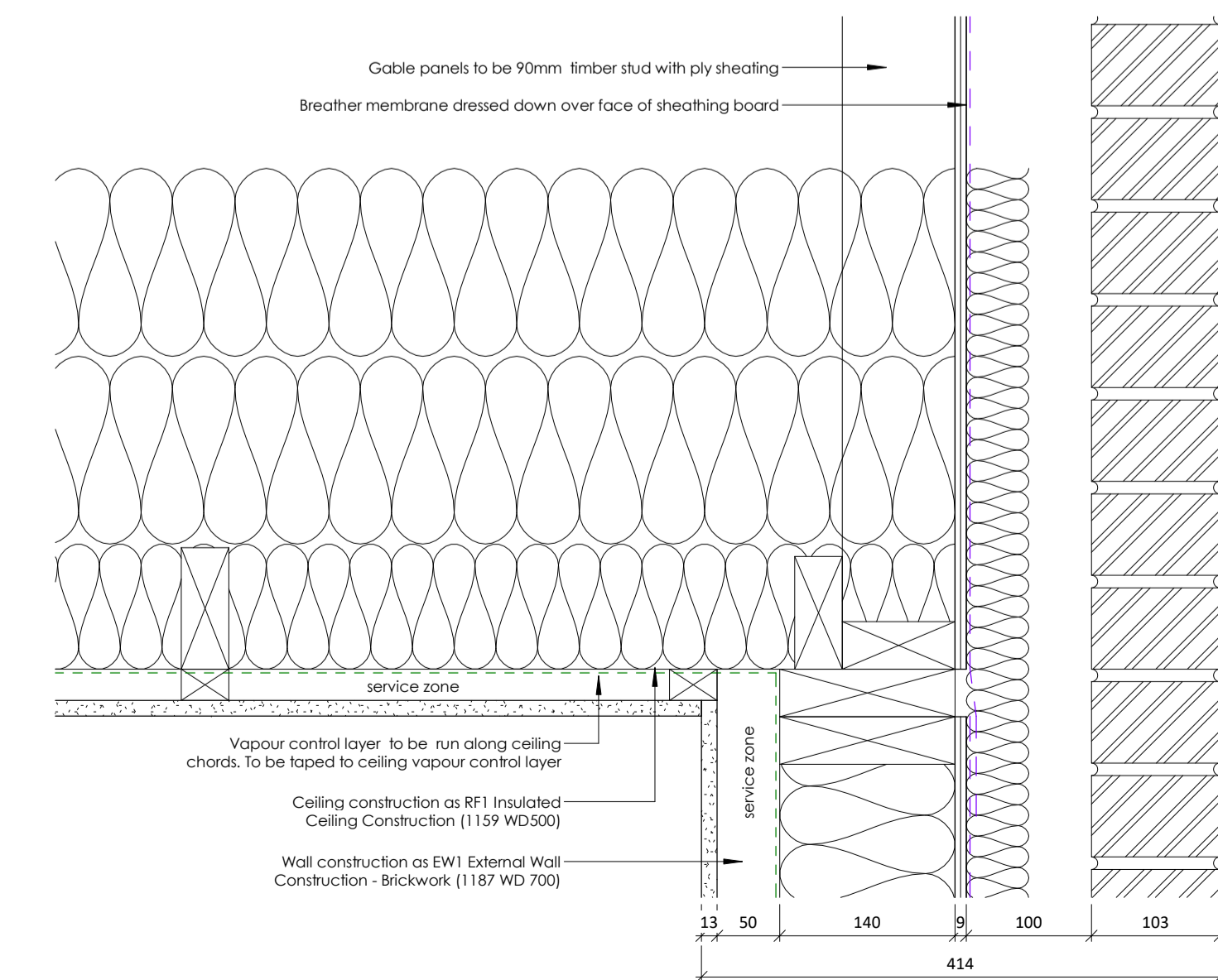
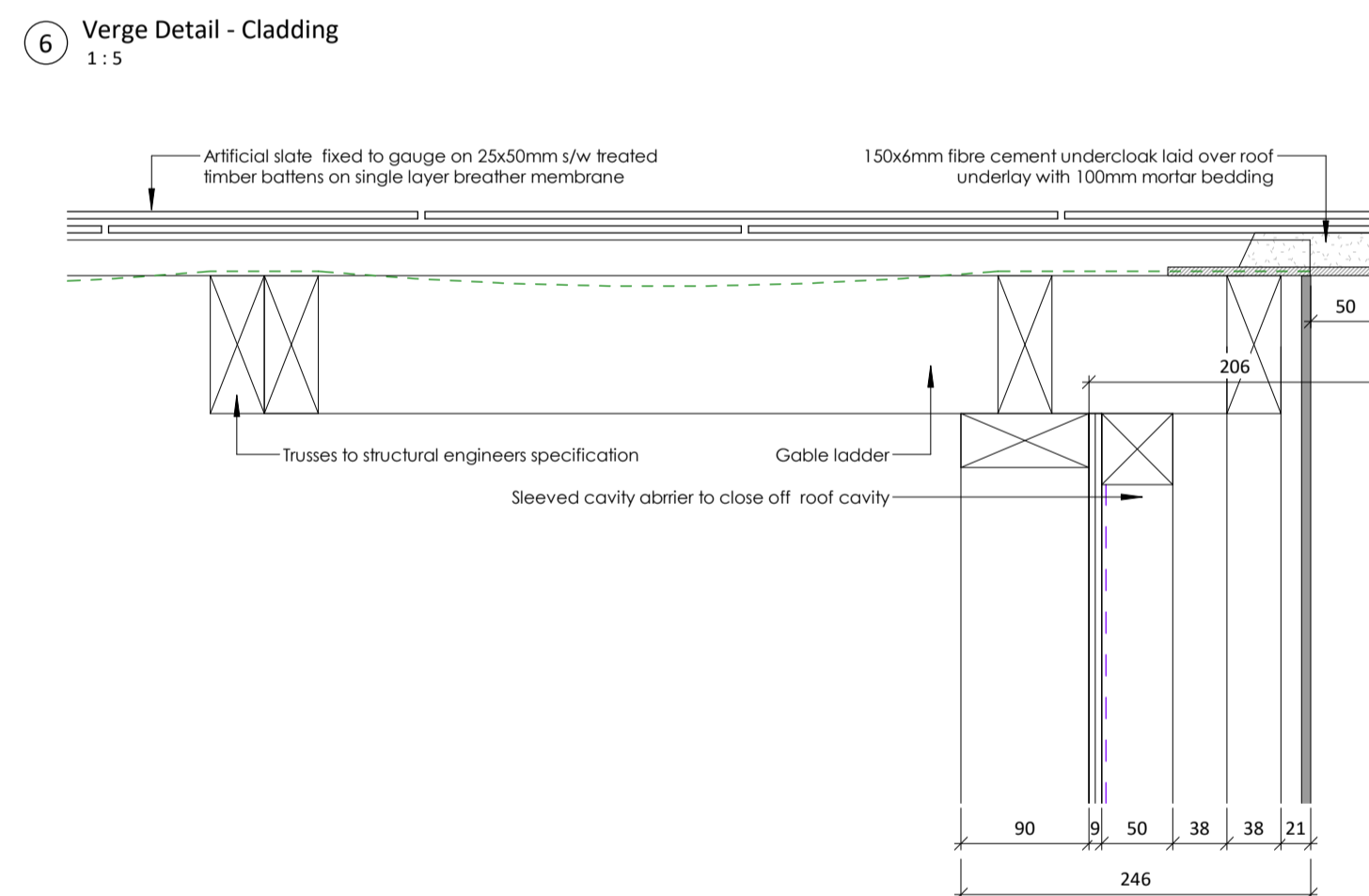
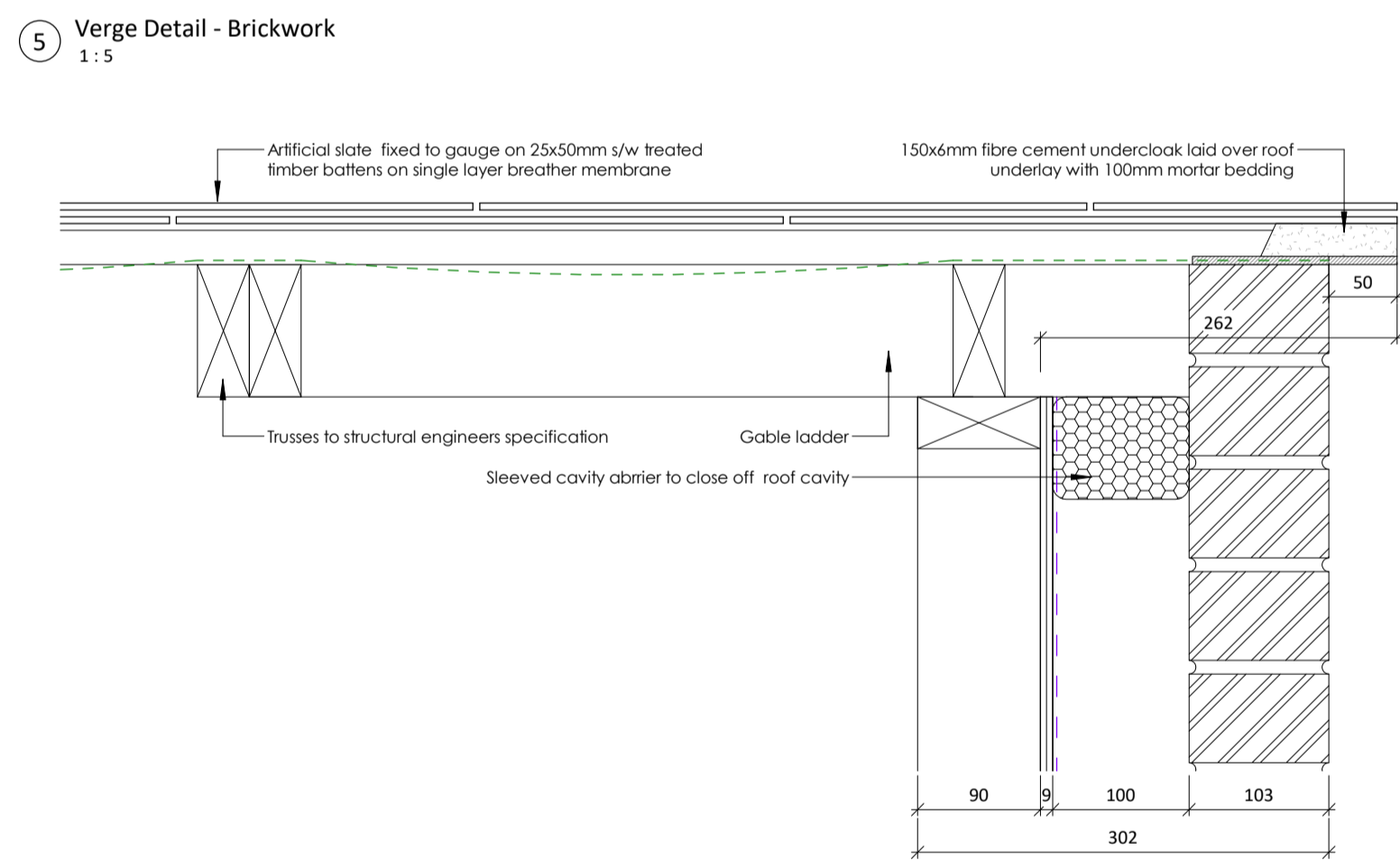


- GENERAL NOTES:
- This drawing is the copyright of Kenn Scaddan Associates Ltd and may not be copied, altered or reproduced in any form or passed on to a third party without written consent. If in doubt ASK.
 - This drawing has been produced exclusively for this project and cannot be used for any other purpose.
 - The drawing reflects current standards and legislation agreed for this project at the time of original issue.
 - This drawing is to be read in conjunction with all relevant architect, structural engineers, mechanical & electrical engineers and specialist drawings / specifications.
 - Any discrepancies in dimensions or details between the various drawings should be reported immediately.
 - All dimensions are in millimetres and all levels are in meters.
 - Do not scale from this drawing, if in doubt ASK.

AIR TIGHTNESS MEMBRANES: DO NOT PUNCTURE THE VAPOUR CONTROL LAYER, DAMP PROOF MEMBRANE OR DPC LAYERS WITHOUT INSTRUCTION TO DO SO. ALL PENETRATIONS MUST BE FULLY SEALED TO ACHIEVE THE 1.5m³/hr.m² AIR TIGHTNESS



C2	19.08.19	Eaves detail 1A added	EG	SS
C1	17.06.19	CONSTRUCTION ISSUE	EG	SS
Rev	DATE	DESCRIPTION	REV BY	CKD BY
CLIENT				

W. Stirling

kenn scaddan
associates
architects

PROJECT
Land to East of Pamber Heath Road
Pamber Heath Road
Pamber
Hampshire

DRAWING TITLE
Roof Details - Sheet 1

DRAWING STATUS
CONSTRUCTION ISSUE
SCALE
1:5 @ A1

PROJECT NO. | DRAWING NO. | REVISION | DRAWN BY
1187 WD 715 | C2 | EG