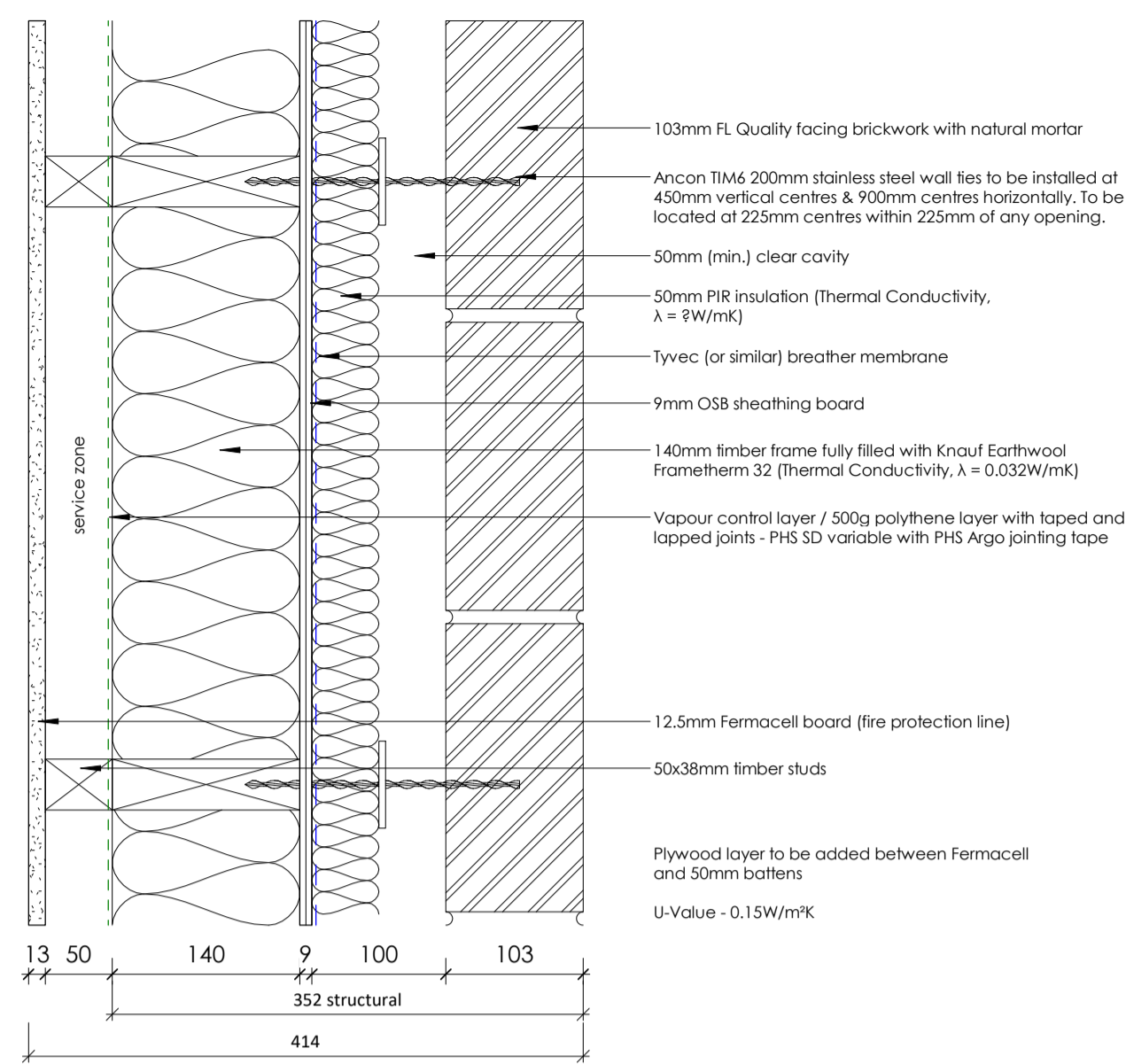
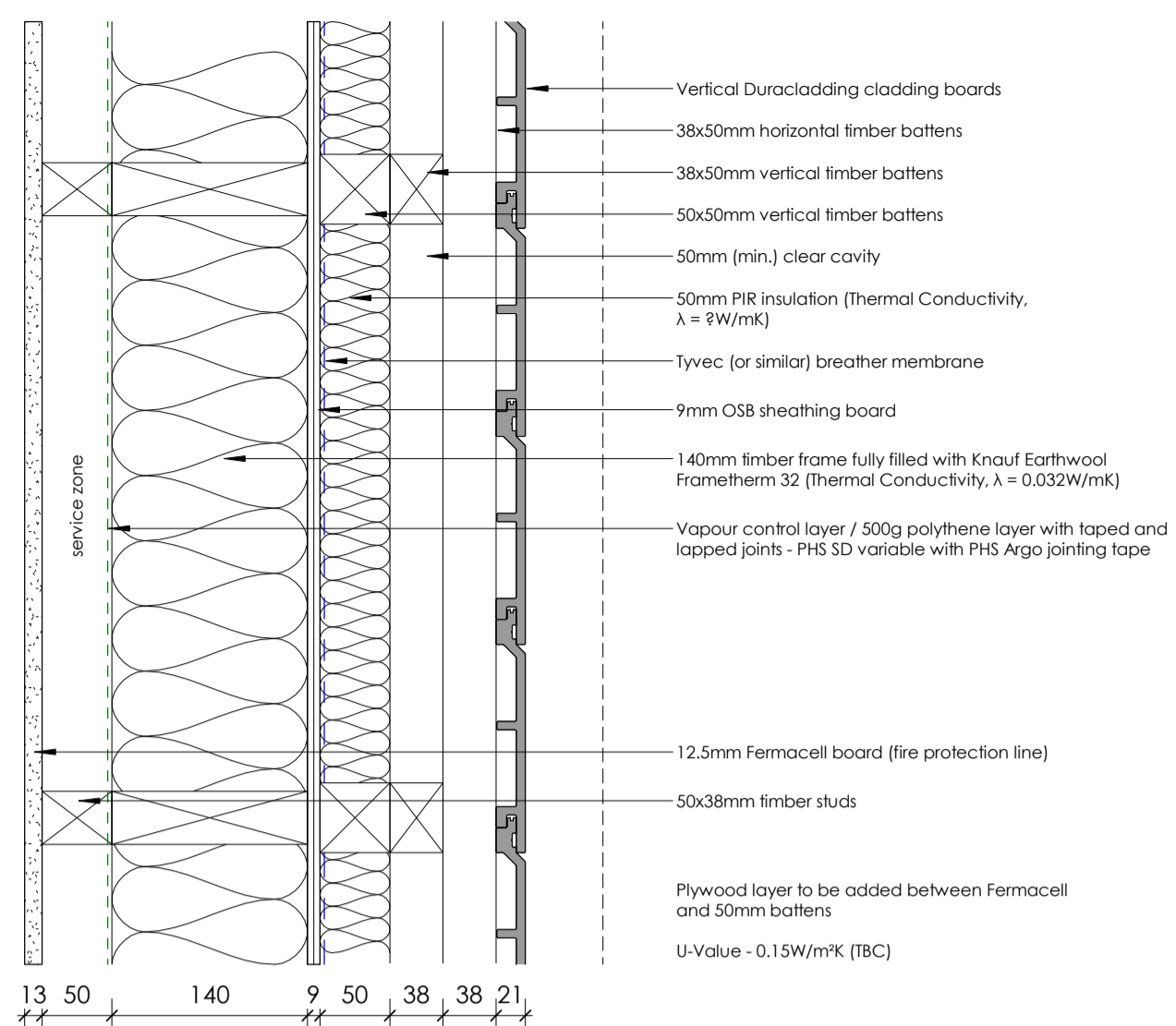


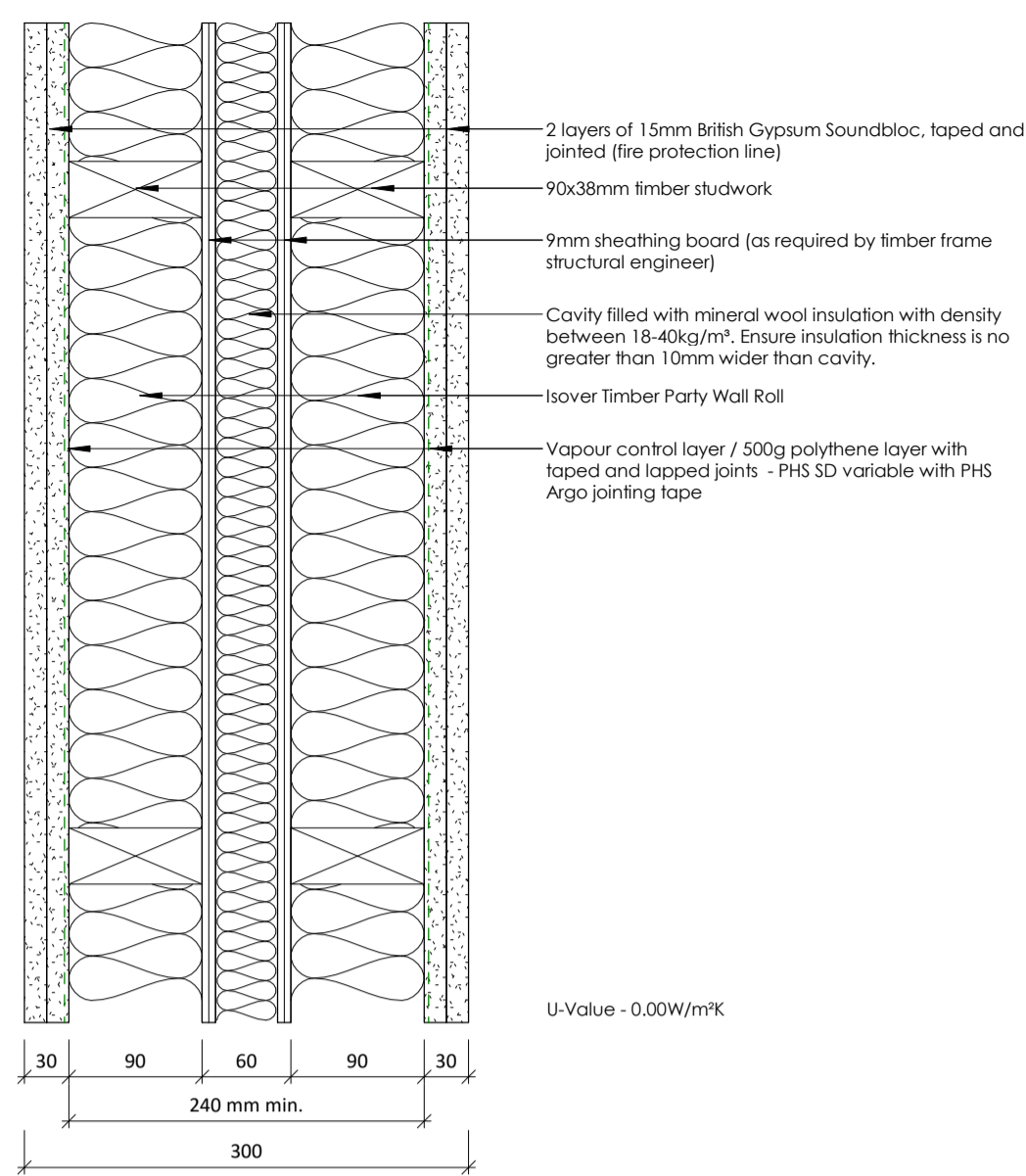
EW1: EXTERNAL WALL BRICKWORK



EW2: EXTERNAL WALL VERTICAL CLADDING



PW1: SEPARATING WALL



NOTES

- The contractor may substitute British Gypsum elements for an alternative manufacturer ie Knauf. Chosen specifications to be provided by MC to enable details to be updated.
- Fabric details to be discussed further with Energy Consultant and AECB assessor.

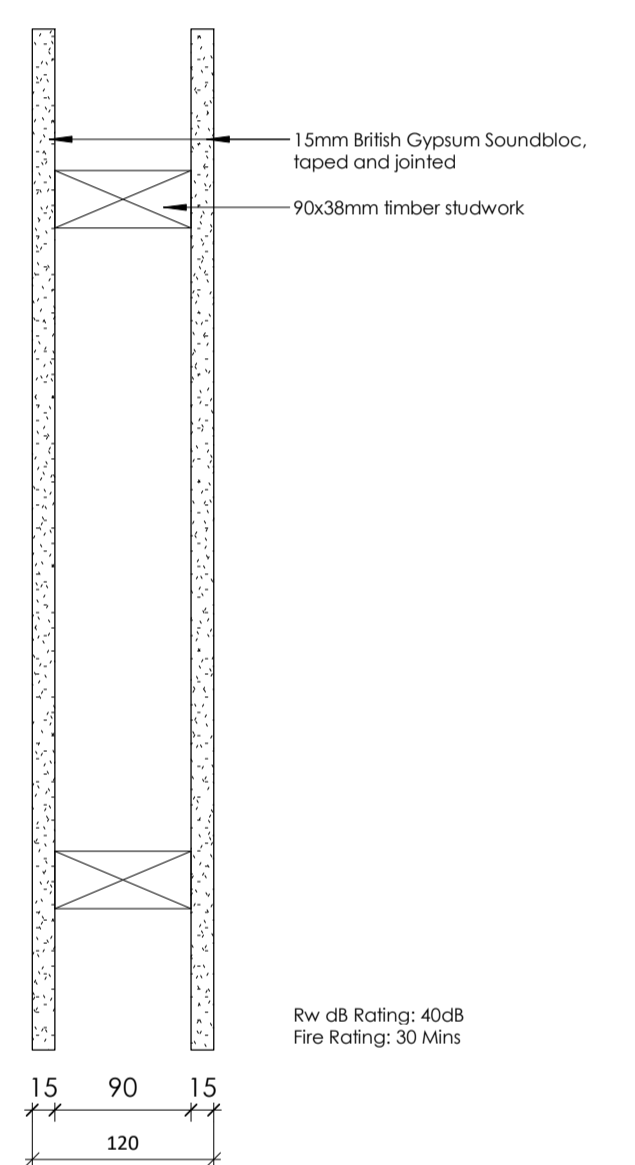
U-VALUES & SAP INFO

External Walls - 0.15W/m²K
 Separating Walls - 0.00W/m²K
 Ground Floor - 0.12W/m²K
 Roof (ceiling level) - 0.11W/m²K
 Entrance Doors - 1.0W/m²K
 Windows - 1.2W/m²K with G-Value of 0.72(hbc)
 Air Permeability - 1.5m³ / hr.m²
 Heating - Worcester Bosch Greenstar Combi 29CDI
 Lighting - 100% low energy
 Renewables - 1.3kwp PV per unit
 Ventilation - MVR System 41 (AECB certified)
 Accredited Construction Details with H-Therm Intels

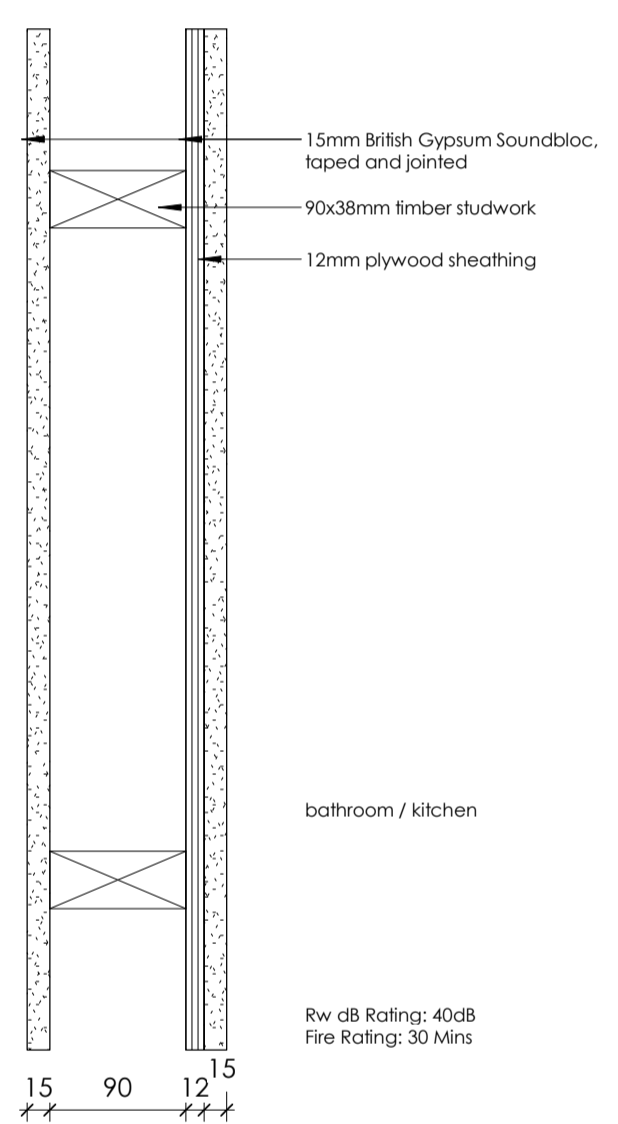
- GENERAL NOTES:**
- This drawing is the copyright of Kenn Scaddan Associates Ltd and may not be copied, altered or reproduced in any form or passed on to a third party without written consent. If in doubt ASK.
 - This drawing has been produced exclusively for this project, and cannot be used for any other purpose.
 - The drawing reflects current standards and legislation agreed for this project at the time of original issue.
 - This drawing is to be read in conjunction with all relevant architect, structural engineers, mechanical & electrical engineers and specialist drawings / specifications.
 - Any discrepancies in dimensions or details between the various drawings should be reported immediately.
 - All dimensions are in millimetres and all levels are in meters.
 - Do not scale from this drawing, if in doubt ASK.

AIR TIGHTNESS MEMBRANES: DO NOT PUNCTURE THE VAPOUR CONTROL LAYER, DAMP PROOF MEMBRANE OR DPC LAYERS WITHOUT INSTRUCTION TO DO SO. ALL PENETRATIONS MUST BE FULLY SEALED TO ACHIEVE THE 1.5m³/hr.m² AIR TIGHTNESS

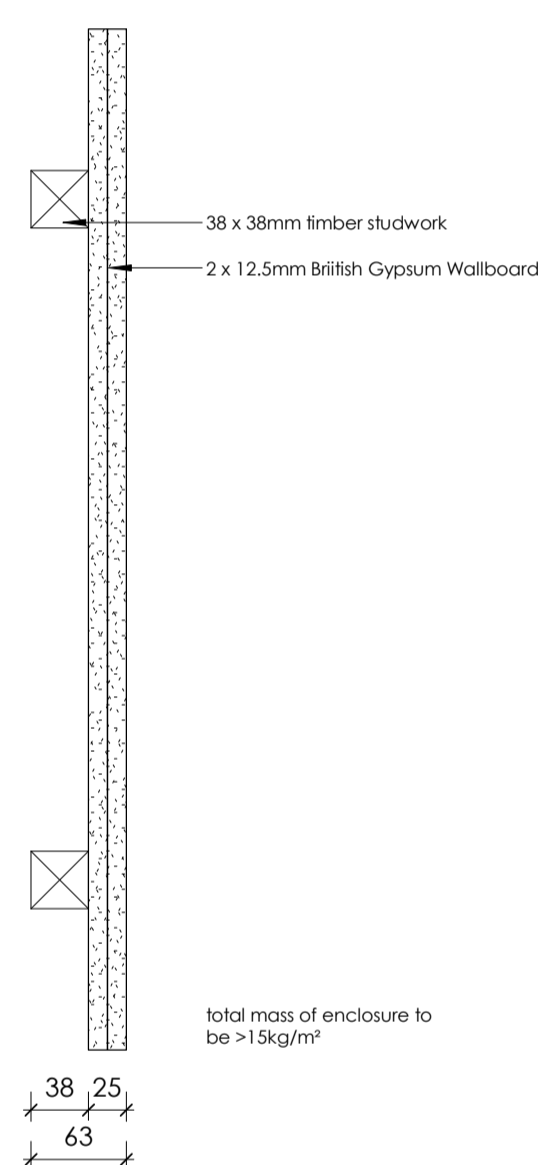
IP1: STANDARD TIMBER PARTITION



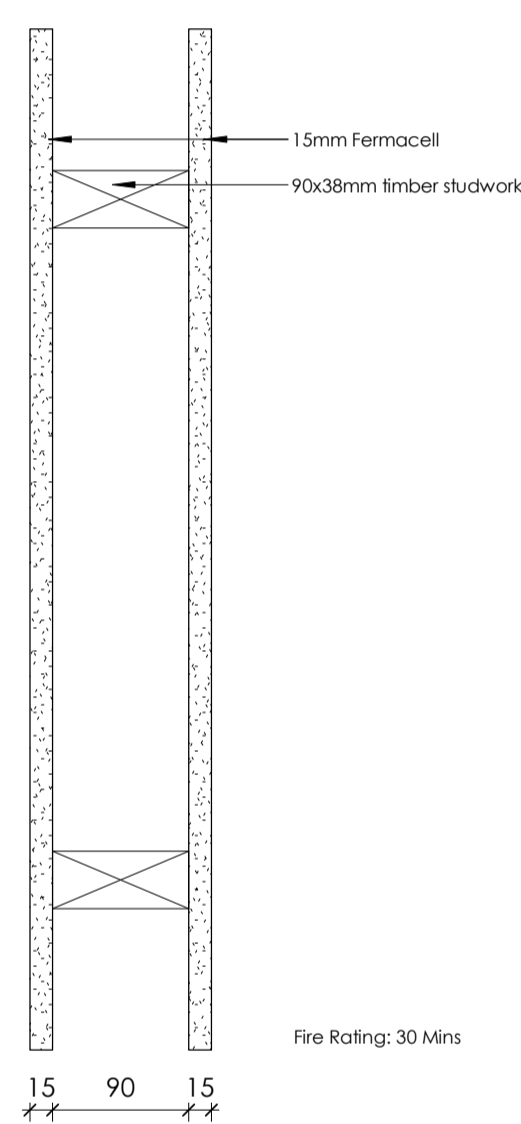
IP2: SHEATHED TIMBER PARTITION



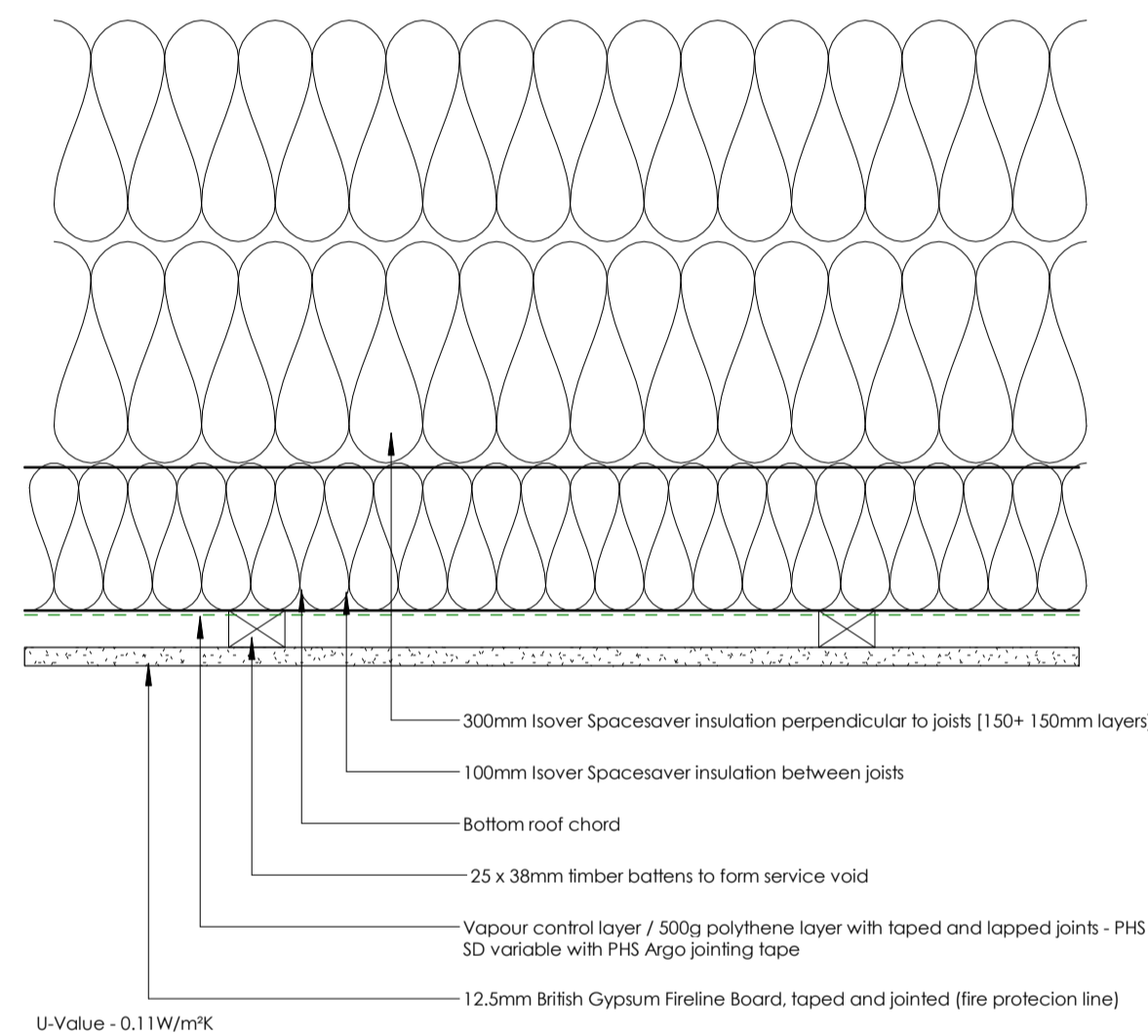
IP3: SOIL PIPE ENCLOSURE



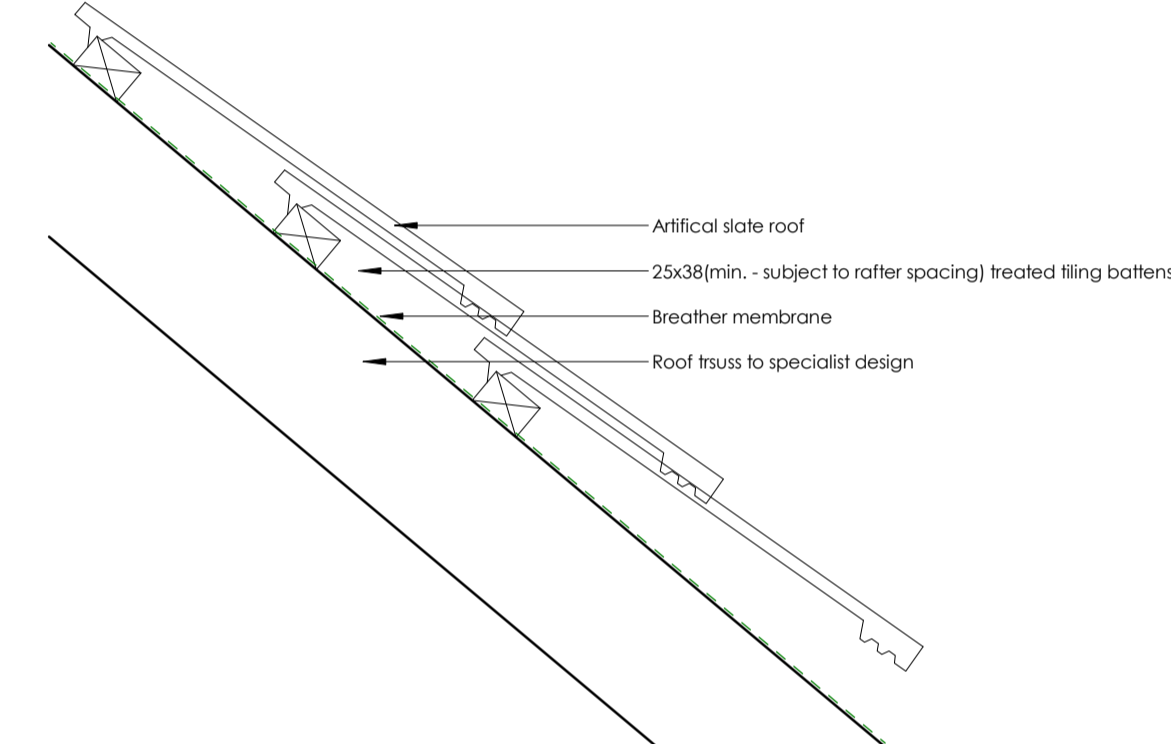
SP1: ROOFSpace SPANDEL PANEL



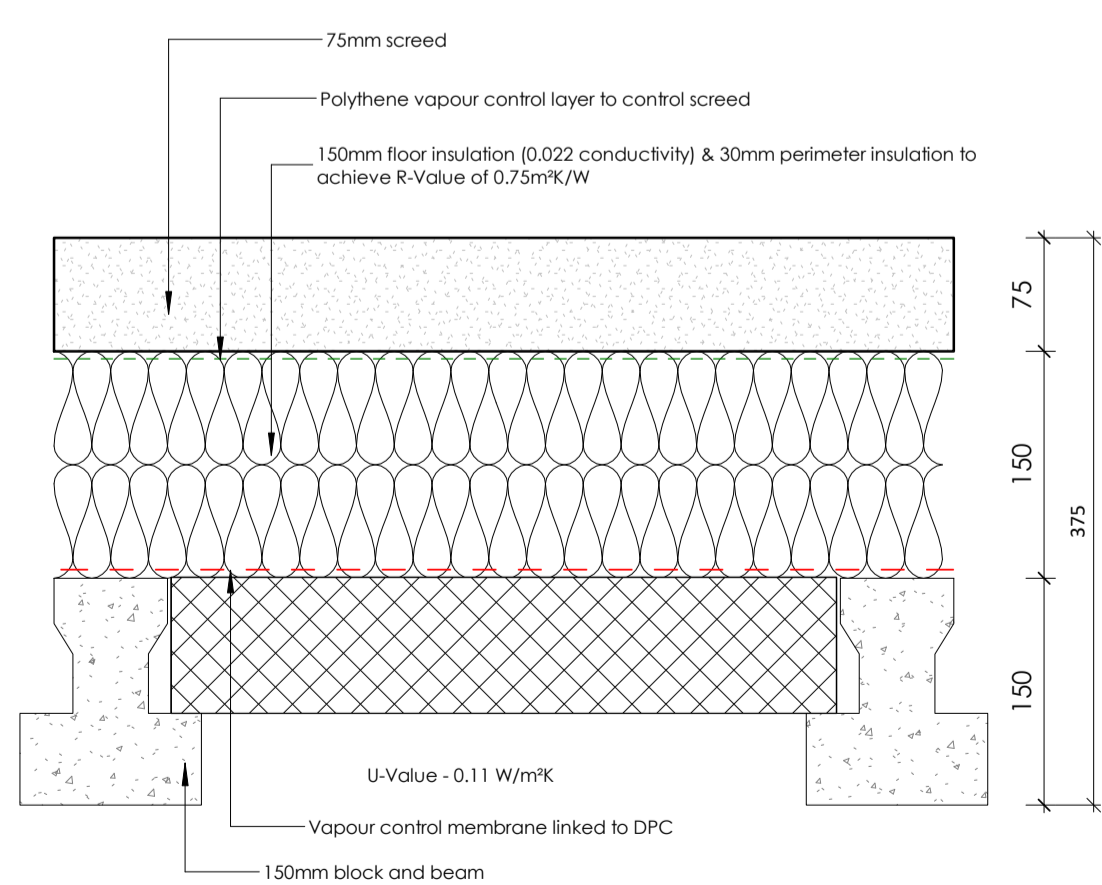
RF1: INSULATED CEILING DETAIL



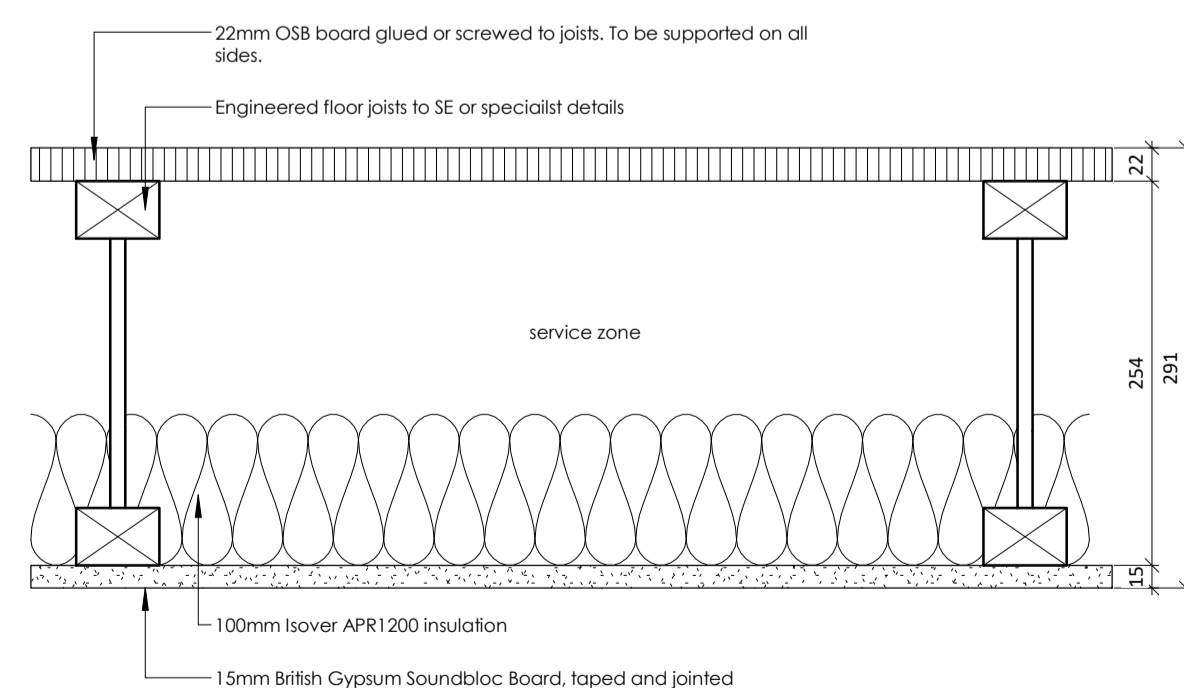
RF2: ROOF DETAIL



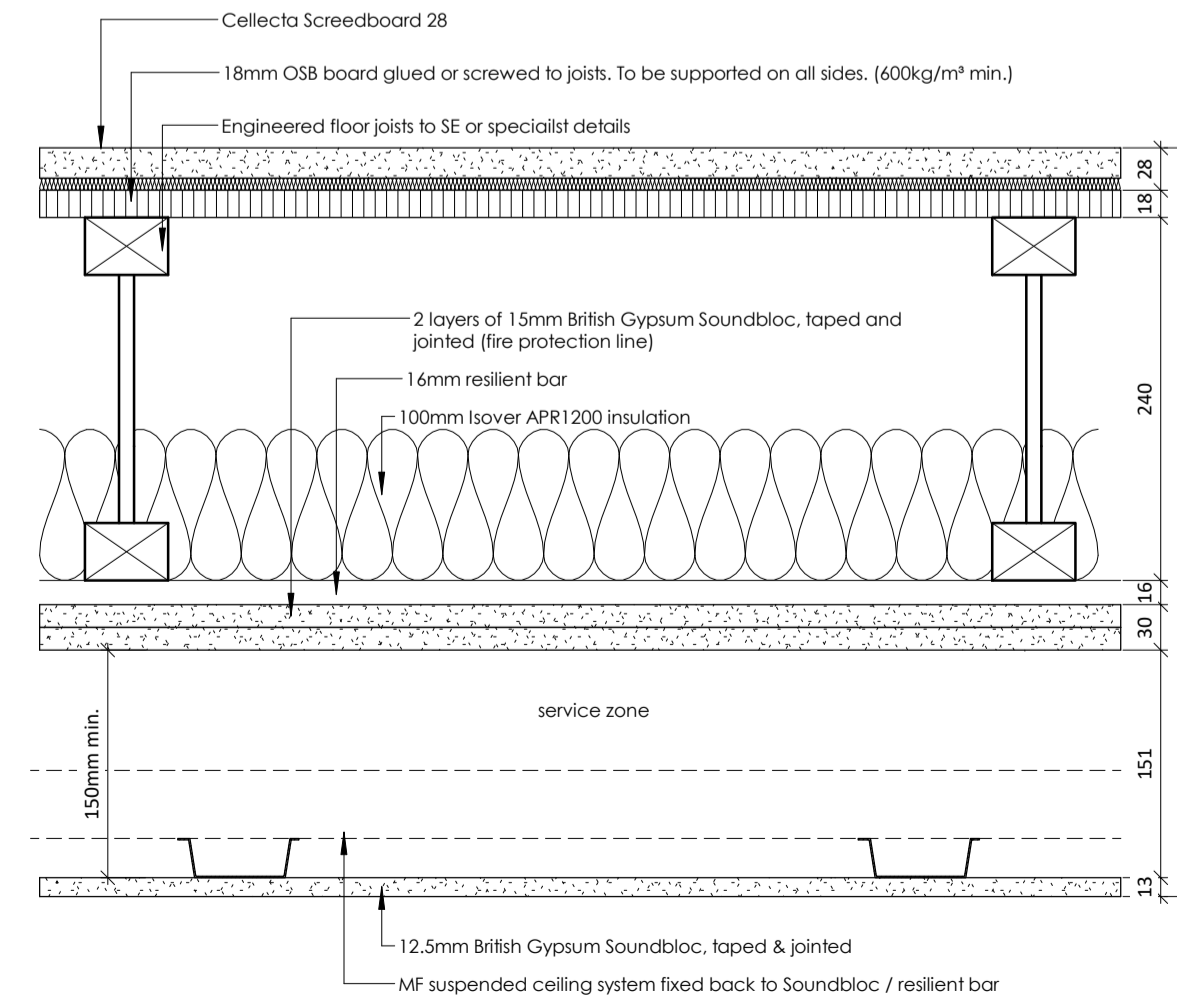
F1: GROUND FLOOR CONSTRUCTION



F3: INTERMEDIATE FLOOR CONSTRUCTION



F4: SEPARATING FLOOR CONSTRUCTION



Rev	DATE	DESCRIPTION	REV BY	CKD BY
C2	26.07.19	Membrane and insulation spec updates	EG	SS
C1	17.06.19	CONSTRUCTION ISSUE	EG	SS

CLIENT



PROJECT
 Land to East of Pamber Heath Road
 Pamber Heath Road
 Pamber
 Hampshire

DRAWING TITLE
 Typical Construction Details

DRAWING STATUS	REVISION	DRAWN BY	SCALE
PRELIMINARY ISSUE	C2	EG	1 : 5 @ A1
PROJECT NO. DRAWING NO.			
1187 WD 700			